

# An anchor point to a drifting world!

An initiative by SIOS Remote Sensing Working Group

To provide a social experience to the Svalbard research community in difficult times

This work is licensed under a Creative Commons BY-NC 4.0 International License (<https://creativecommons.org/licenses/by-nc/4.0/>)

Friday, 27<sup>th</sup> March, Time: 12:45 to 16:00 Hrs CET

Zoom: <https://zoom.us/j/130974126>

30. mars 2020

Navn Etternavn, Svalbard

Shridhar Jawak, Remote Sensing Officer



# An anchor point to a drifting world!

## Talks:

12:45 - 13:00 Shridhar Jawak (SIOS Remote Sensing Officer)

**Welcome and introduction to the webinar**

13:00 - 13:30 Agnar Sivertsen (NORCE):

**Airborne remote sensing in Svalbard (with emphasis on recently launched SIOS's opportunity)**

13:30 - 14:00 Ann Mari Fjæraa (NILU):

**New Pandora Spectrometer instrument and opportunities for atmospheric Cal/Val in Arctic areas**

14:00 - 14:30 Veijo Pohjola (Uppsala University):

**Glaciological & microbiological observations of Lomonosovfonna perennial firn aquifer**

14:30 - 15:00 Roberto Salzano (CNR):

**The support of terrestrial photography on cryospheric studies in Svalbard islands**

15:00 - 15:30 Jack Kohler (NPI):

**Svalbard glacier mass balance from annual Arctic DEMs 2013-2017**



# An anchor point to a drifting world!

**15:30 - 16:00 Panel discussion: “Damage mitigation for the Svalbard scientific community”**

**Moderator:** Veijo Pohjola, Co-Chair, RSWG

**Panel:** Heikki Lihavainen, Jack Kohler, Agnar Sivertsen, Roberto Salzano, Ann Mari Fjæraa

The panel discussion will focus on what kind of data and field activities are being affected due to current situation. The remote sensing community will respond on how they can help in this situation.

- What are possible effects of the current situation on Svalbard research in general?
- How would EO/RS based studies get affected?
- How to control the damage because of cancelled field campaigns and data loss by using remote sensing observations?
- Can we fill all the data gaps in observations using remote sensing?
- What can be done to fill the gap of missing ground truthing this year?



# Logistics Notice Board

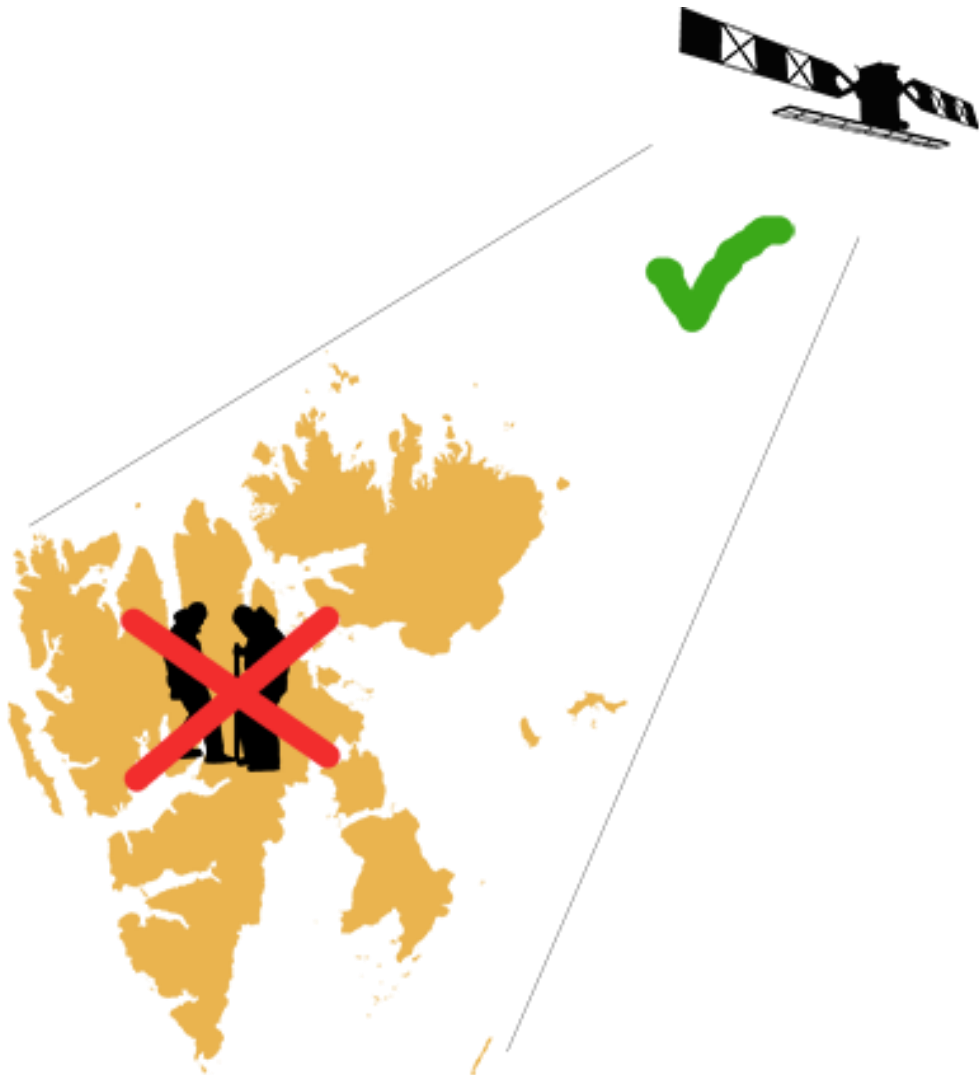


**Why?** to make research activities more efficient economically, environmentally and in terms of researcher time and effort.

*- Do you have an extra seat on your helicopter or spare capacity on your research cruise? Are you in need of samples all over Svalbard? Has your sonde landed on Edgeøya?*

this tool may also be useful for connecting those that are able to carry out work in Svalbard and those that have work that they are not able to do.

# Patch up your field data gaps with remote sensing



Most of our members had to cancel planned field campaigns to Svalbard in March and April 2020.

Developments in travel restrictions in coming months are unclear and we are expecting more cancellations of field campaigns this year leading to further gaps in observations.

Some of these data gaps can be filled with remote sensing observations.

Mapping the needs of researchers and evaluate the possibilities to provide remote sensing observations in the absence of field campaigns in Svalbard.

**If you think that remote sensing data may be used to fill your data gaps, please fill in the webform**

# Announcement of Opportunity (AO) in Airborne Remote Sensing



## Timeline of the call

- **Opening of call:** 20 March 2020
- **Deadline to submit proposal:** 20 April 2020
- **Decision:** Expected by Mid-May
- **Image/data acquisition period:** 20 May - 15 September (Spring-Summer)



## Available funding

1 MNOK

- approximate 25 flight hours using the Dornier aircraft
- approximate 50 flight hours using drones

# A way forward!

## Terrestrial Remote Sensing Training Course in Svalbard

- **Period:** 1st week of Sept. 2020
- **Location:** Longyearbyen, Svalbard
- **Duration:** 4-5 Days
  
- **Target audience:** Terrestrial scientists, masters and PhD students, researchers and postdocs
  
- Special sessions on terrestrial applications of hyperspectral remote sensing and drones
- Satellite cal/val activities using in situ measurements
- SIOS-InfraNor related field excursion on sites

**Monthly webinar series**

**Online conference**

**Online training**



*Image courtesy: NASA*

# Special issue to facilitate publications in remote sensing

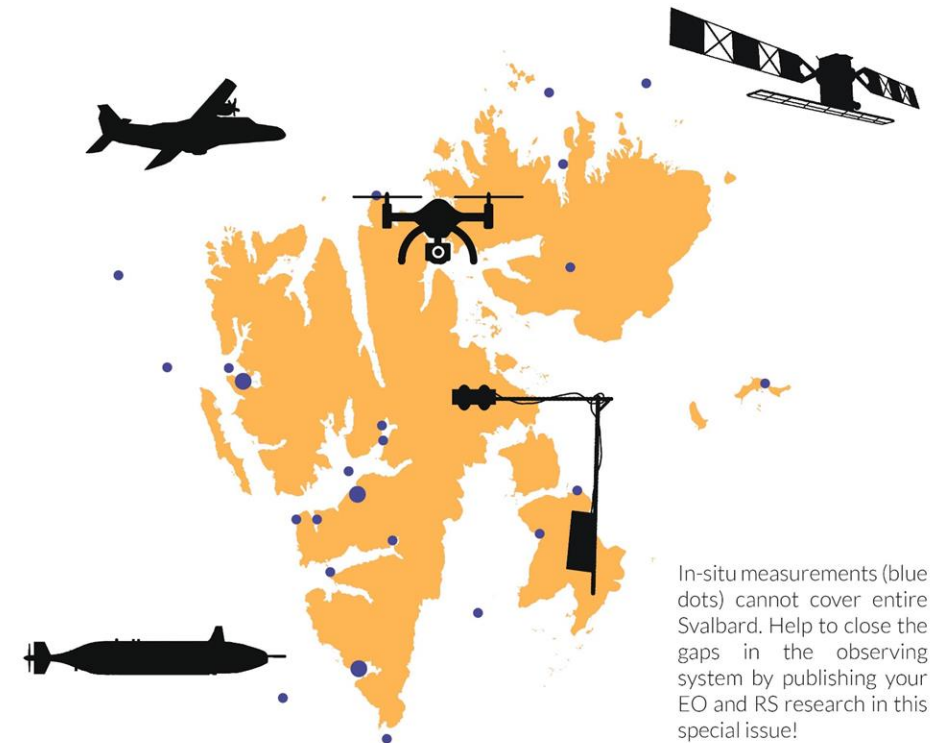
- Attract relevant contributions from the whole Svalbard science community
- Projects funded by SIOS-ACCESS programme, SIOS-InfraNor, and chapters from SIOS-SESS report
- EO/RS/GI techniques relevant for field campaigns, modelling, and long-term monitoring programs
- cal/val activities for satellite missions that are being conducted in Svalbard e.g. Pandora installation in Ny Ålesund, cal/val of snow parameters from satellite, cal/val activities using moorings and many more



SIOS's special issue on  
Earth Observation (EO), Remote Sensing (RS) and Geoinformation (GI)  
applications in Svalbard

Open for submission!  
1 March 2020 - 31 December 2021

Up to 50% discount for  
SIOS related manuscripts!



Check our website for details:

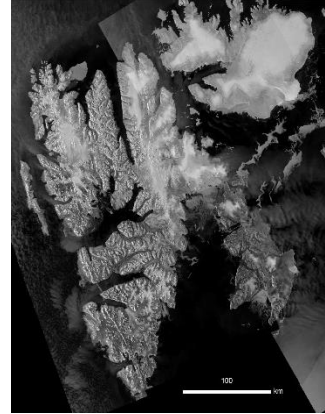
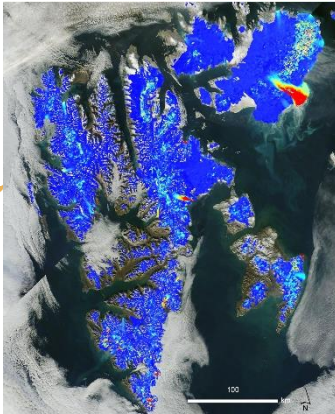
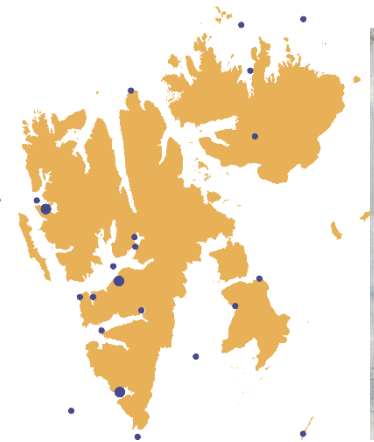
[www.sios-svalbard.org/SpecialIssueRemoteSensing](http://www.sios-svalbard.org/SpecialIssueRemoteSensing)







## Earth Observation (EO), Remote Sensing (RS), and Geoinformation (GI) Applications in Svalbard



### *Special Issue Editors:*

Dr. Shridhar D. Jawak

Prof. Dr. Andreas Kääh

Dr. Geir Moholdt

Dr. Malgorzata Blaszczyk

Ms. Ann Mari Fjæraa

Dr. Roberto Salzano

Prof. Dr. Veijo Pohjola

Prof. Hiroyuki Enomoto

Dr. Kjell Arild Høgda

Dr. Bo N. Andersen

Dr. Bartłomiej Luks

Dr. Frode Dinessen

### *Special Discount on Article Processing Charge (APC)*

**50% discount** for manuscripts

- from guest editors;
- from SIOS activities, e.g. [InfraNor](#), [SESS report](#), and [SIOS Access Projects](#).

**30% discount** for manuscripts

- invited by guest editors;
- submitted by authors from SIOS member institutes
- submitted by any PhD student as a first or corresponding author

This *Special Issue* will provide a broad platform to various regional and Svalbard-wide studies that are being conducted using EO/RS/GI.

We especially encourage contributors to provide access of data and products generated as a part of study via the SIOS data management system (SDMS).

# Slido Survey

## How to Participate?

Go to: Sli.do on your smart phone/computer

Insert the event code: **# SVALBARD**

Respond to questions