

# SERVICES

The **SIOS Knowledge Centre** is located in the Svalbard Science Centre in Longyearbyen and coordinates the services offered for the Earth System Science community. SIOS members actively develop the services through working groups.

## Science Optimisation

Optimising observations of core data to maximise spatial and temporal coverage while minimising environmental footprint.

The annual State of Environmental Science in Svalbard (SESS) report lets research groups recommend priorities and thus influence the development of the observing system.

The Polar Night Week gathers the SIOS community and is a platform for exchange, reflection and planning.



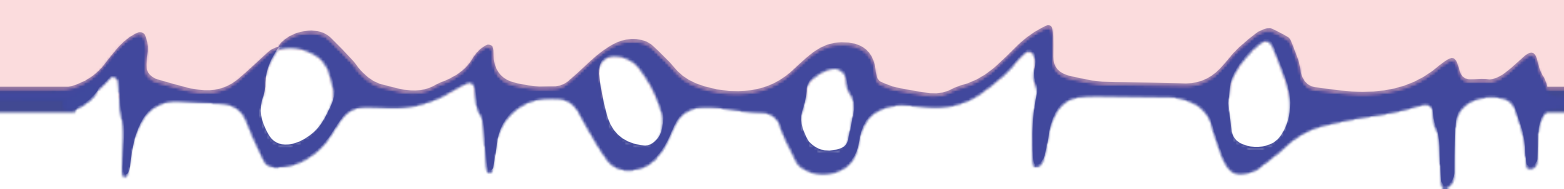
## Data Management

The SIOS data access point: Integrating SIOS partner data repositories through a common virtual data centre.

Tools to facilitate data management for the single researcher.

Guidance towards good data management right from the project planning phase.

Making data Findable, Accessible, Interoperable and Reusable (FAIR).



## Access and logistics

An annual call for access to research infrastructure and data.

The Observation Facility Catalogue: Describing the existing research infrastructure.

Information, discounts, access and special offers for a range of logistical services - exclusively for SIOS members.



The logistical notice board enables researchers to coordinate and share field logistics.

## Remote Sensing

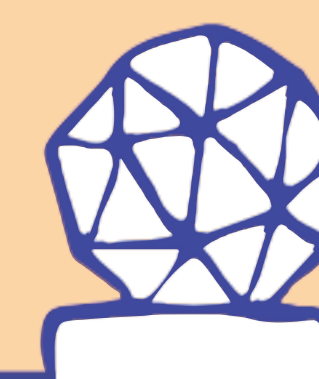


Single point of contact for satellite information for Svalbard.

Inform about opportunities and improve usability of remote sensing data.

Providing tools for satellite data acquisition.

Streamlined access to Copernicus satellite data.



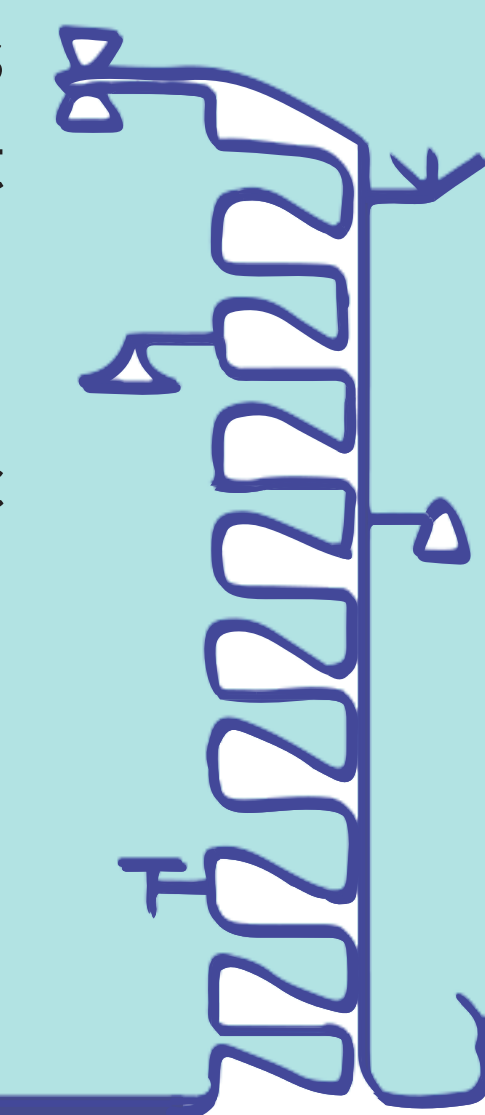
## Training



Providing Earth System scientists with necessary skills to make best use of our members' research infrastructure.

Custom made courses and webinars - in cooperation with the target groups.

Contact us and suggest a topic important for you!



## Communication and outreach

News from the SIOS community - promotion of our members.

Inform about the activities relevant for Earth System Science.

Educate the public and stakeholders using the SESS report.

